

D-ONE

Turn your exposure

*Versatile showcases suitable for any space and event.
Equipped with automatic opening with retractable glass
activated by control card.*

Vetrina versatile adatta a qualsiasi spazio ed evento.
Dotata di apertura automatica con vetro scorrevole
azionato tramite badge.



SHOWCASES



D-ONE

Turn your exposure

Dimensions

Dimensioni

- 50 x 50 x 176 cm

Display dimensions

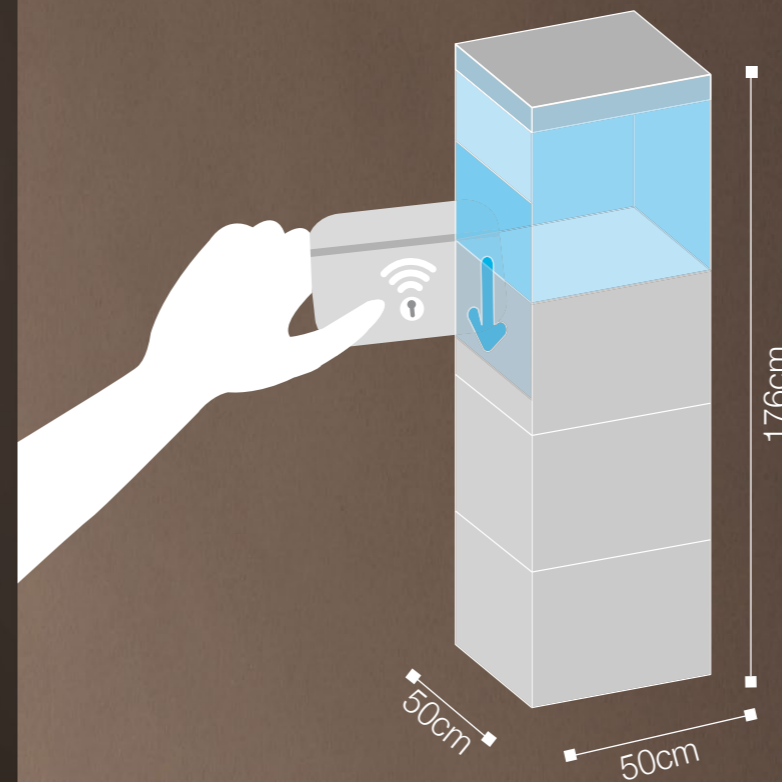
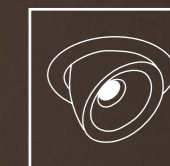
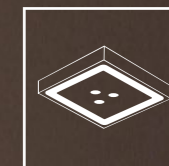
Dimensione esposizione

- 40 x 40 x 46 cm

Lights

Luci

- Spinled Q*
- Led Spotlights 4x9W



Weight

Peso

- 80 Kg

design by Fabio Antonuzzi



Suggested lights
* Illuminazione consigliata



Finishings

Finiture

- *Lacquered matt*
Laccato opaco

White
Bianco



Black
Nero



Dark brown
Marrone scuro



- *Lacquered glossy*
Laccato lucido

White
Bianco



Black
Nero

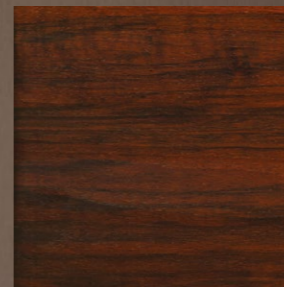


Platinum
Platino

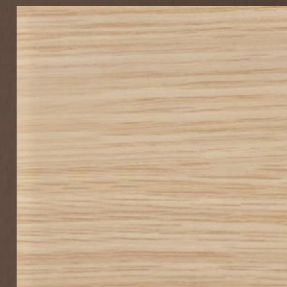


- *Wood*
Legno

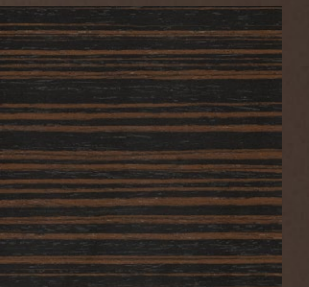
Rosewood
Palissandro



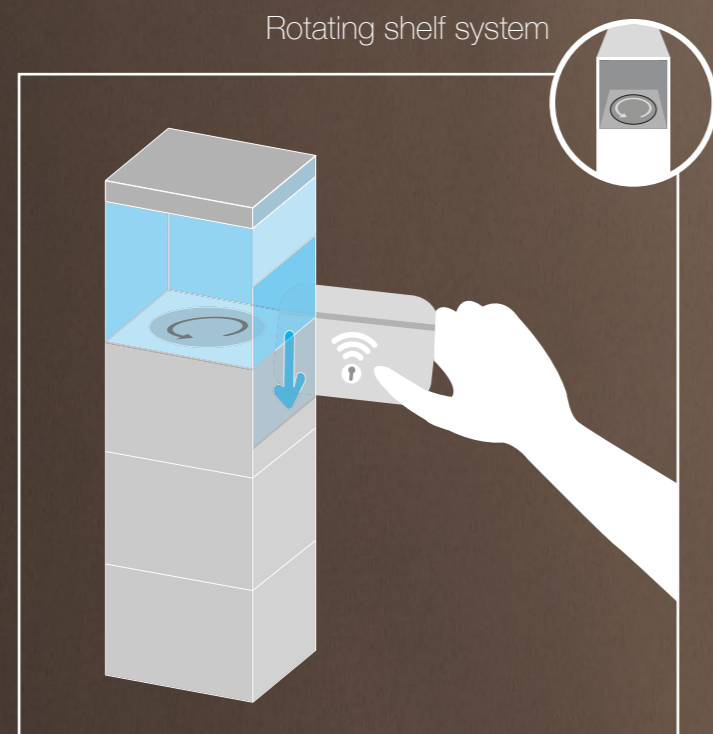
Whiten oak
Rovere sbiancato



Ebony makassar
Ebano macassar

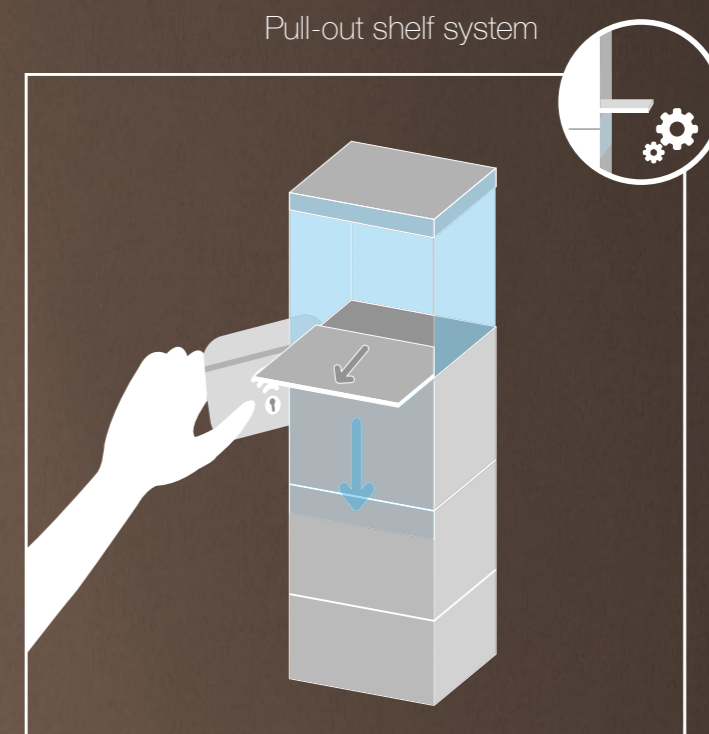


OPTIONAL



This showcase is fair-friendly. While opened the rotating base helps the showcase setting.

Optional particolarmente adatto in ambito fieristico.
La base espositiva rotante agevola l'allestimento.



Pull out the display shelf makes the jewel more accessible during the dealing with a customer and helps showcase fitting.

Il ripiano estraibile rende il gioiello più accessibile durante la contrattazione con un potenziale cliente e agevola notevolmente l'allestimento dell'esposizione stessa.