

PIUMA

I like to move

The lightest showcase on the jewelry market. Usefull for any occasion. Thanks to its maximum portability PIUMA can be used to launch a product or to create a corner. Automatic glass scrolling is activated by control card.

La vetrina più leggera del nostro catalogo. Grazie alla sua massima trasportabilità PIUMA può essere utilizzata per il lancio di un prodotto o per impreziosire un angolo del punto vendita. L'apertura del vetro automatico è attivata tramite badge.



SHOWCASES



PIUMA

I like to move

Dimensions

Dimensioni

- 50 x 50 x 176 cm

Display dimensions

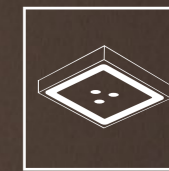
Dimensione esposizione

- 40 x 40 x 46 cm

Lights

Luci

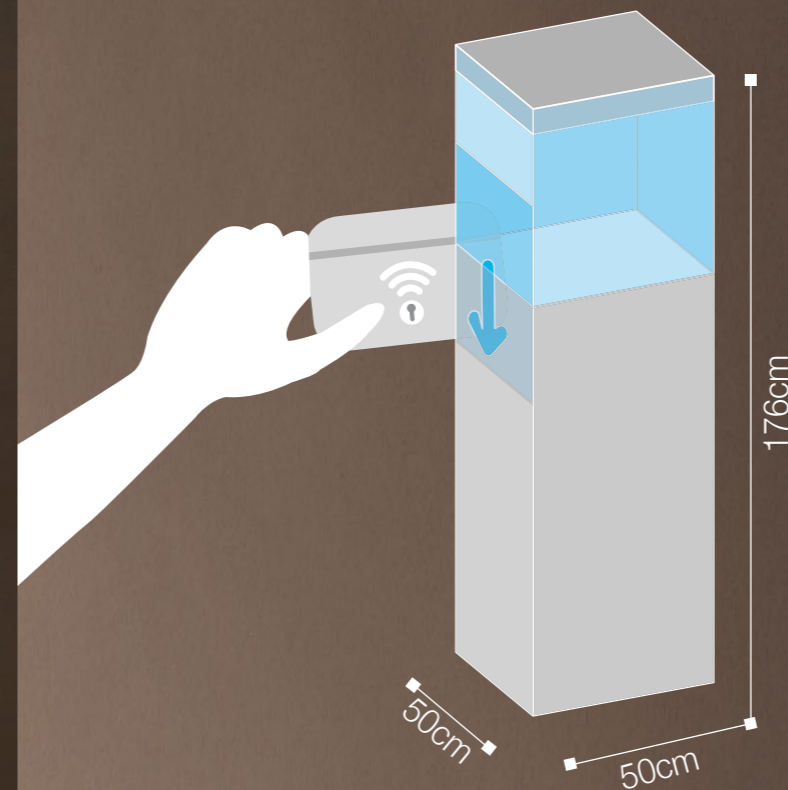
- Spinled Q^{*}
- Led Spotlights 4x9W



Weight

Peso

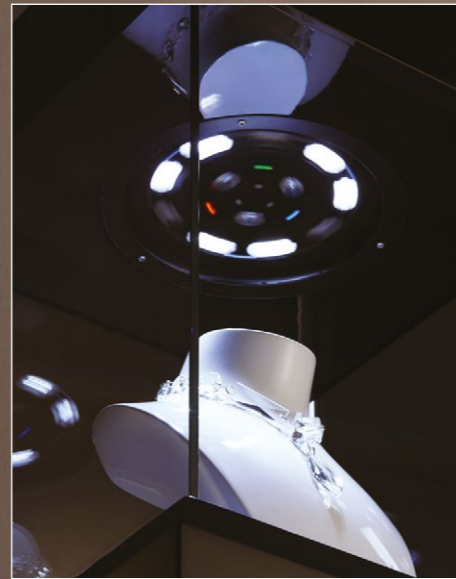
- 60 Kg



design by Fabio Antonuzzi



Suggested lights
^{*} Illuminazione consigliata



■ *Lacquered matt*
Laccato opaco

■ *Lacquered glossy*
Laccato lucido

■ *Wood*
Legno

Finishings

Finiture

White
Bianco



Black
Nero



Dark brown
Marrone scuro



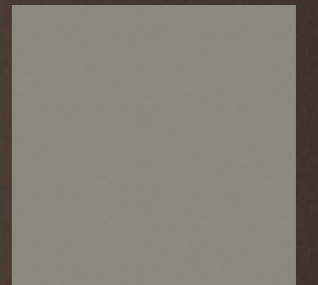
White
Bianco



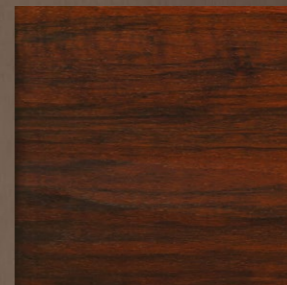
Black
Nero



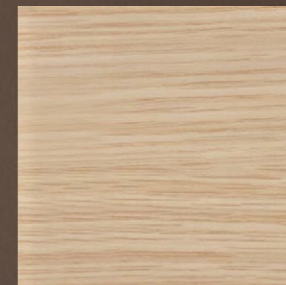
Platinum
Platino



Rosewood
Palissandro



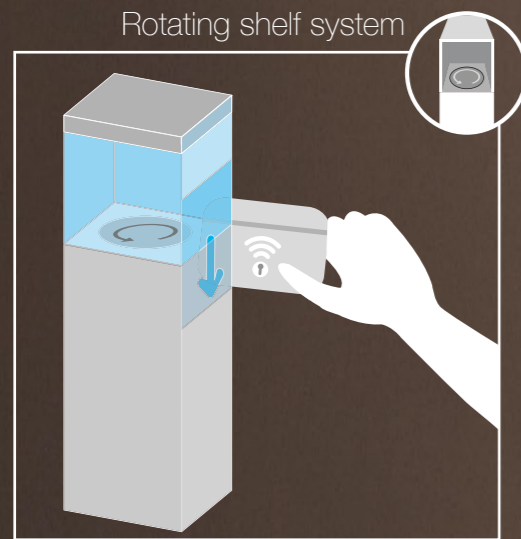
Whiten oak
Rovere sbiancato



Ebony makassar
Ebano macassar

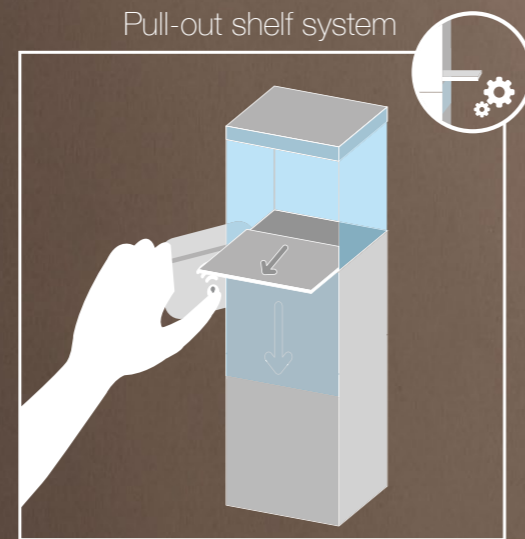


OPTIONAL SYSTEM



This showcase is fair-friendly. While opened the rotating base helps the showcase setting.

Optional particolarmente adatto in ambito fieristico. La base espositiva rotante agevola l'allestimento.



Pull out the display shelf makes the jewel more accessible during the dealing with a customer and helps showcase fitting.

Il ripiano estraibile rende il gioiello più accessibile durante la contrattazione con un potenziale cliente e agevola notevolmente l'allestimento dell'esposizione stessa.

Cover



Protective cover useful for PIUMA transportation during events and exhibitions.

Cover protettiva utile per il trasporto di Piuma durante fiere ed eventi.